

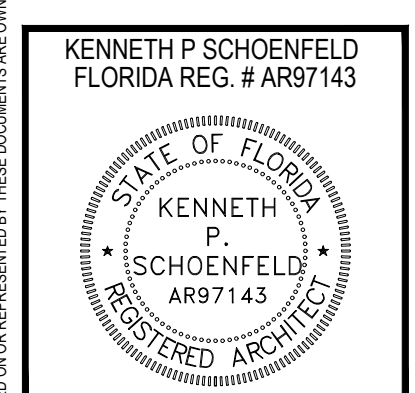
CONSTRUCTION DOCUMENTS FOR
PARADISE POINTE at CHARLOTTE HARBOR
 CITY OF PUNTA GORDA, FLORIDA
 PARCEL ID: 41221417002

PDS ARCHITECTURE INC.
 12800 UNIVERSITY DR., SUITE 402
 FT MYERS, FL 33907
 PH: 239.437.8090
 FX: 855.835.2733
 INFO@PDSinonline.com
 FL LICENSE # AA26002474

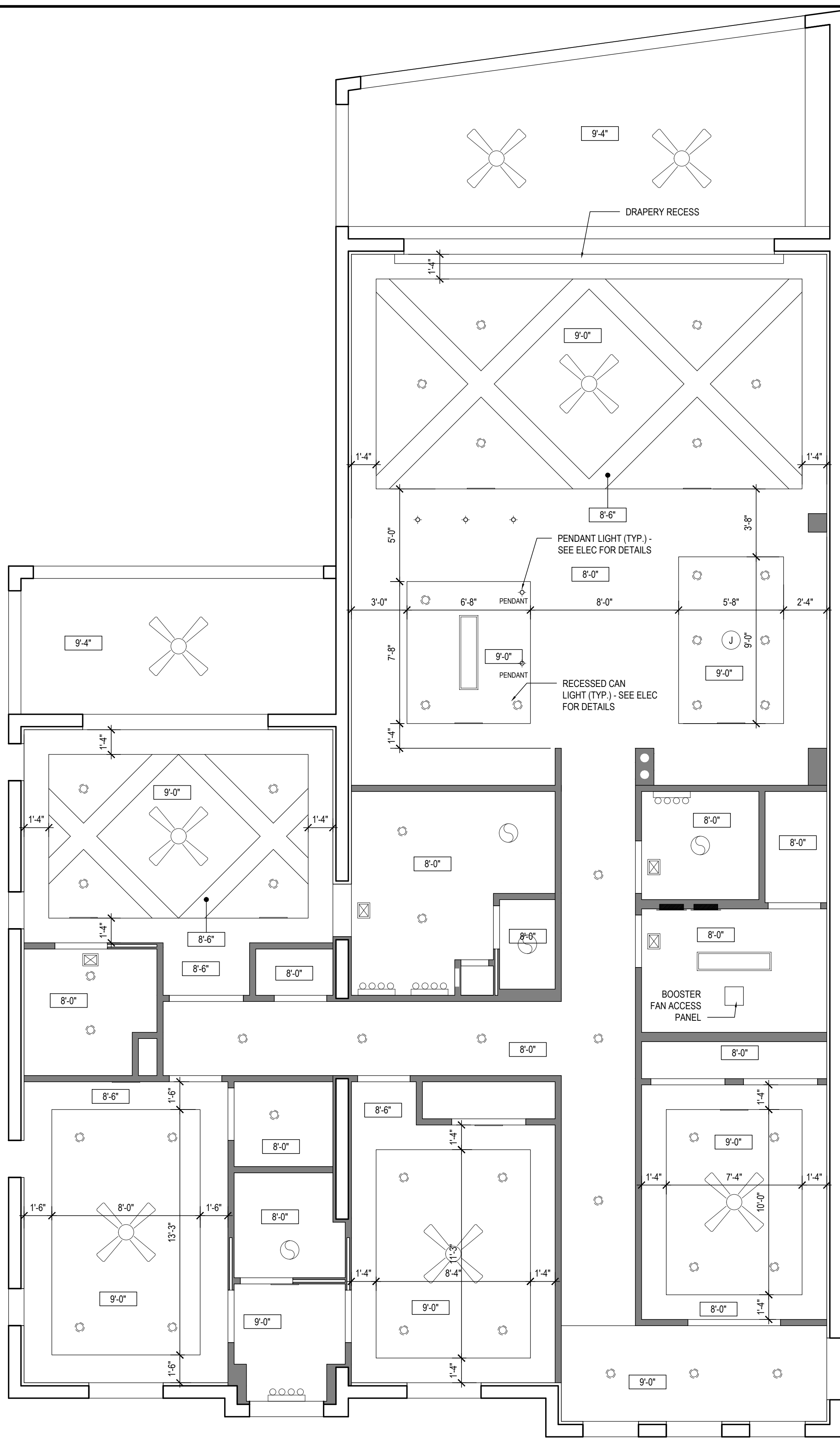


DATE: 8-15-18
 TITLE: UNIT B

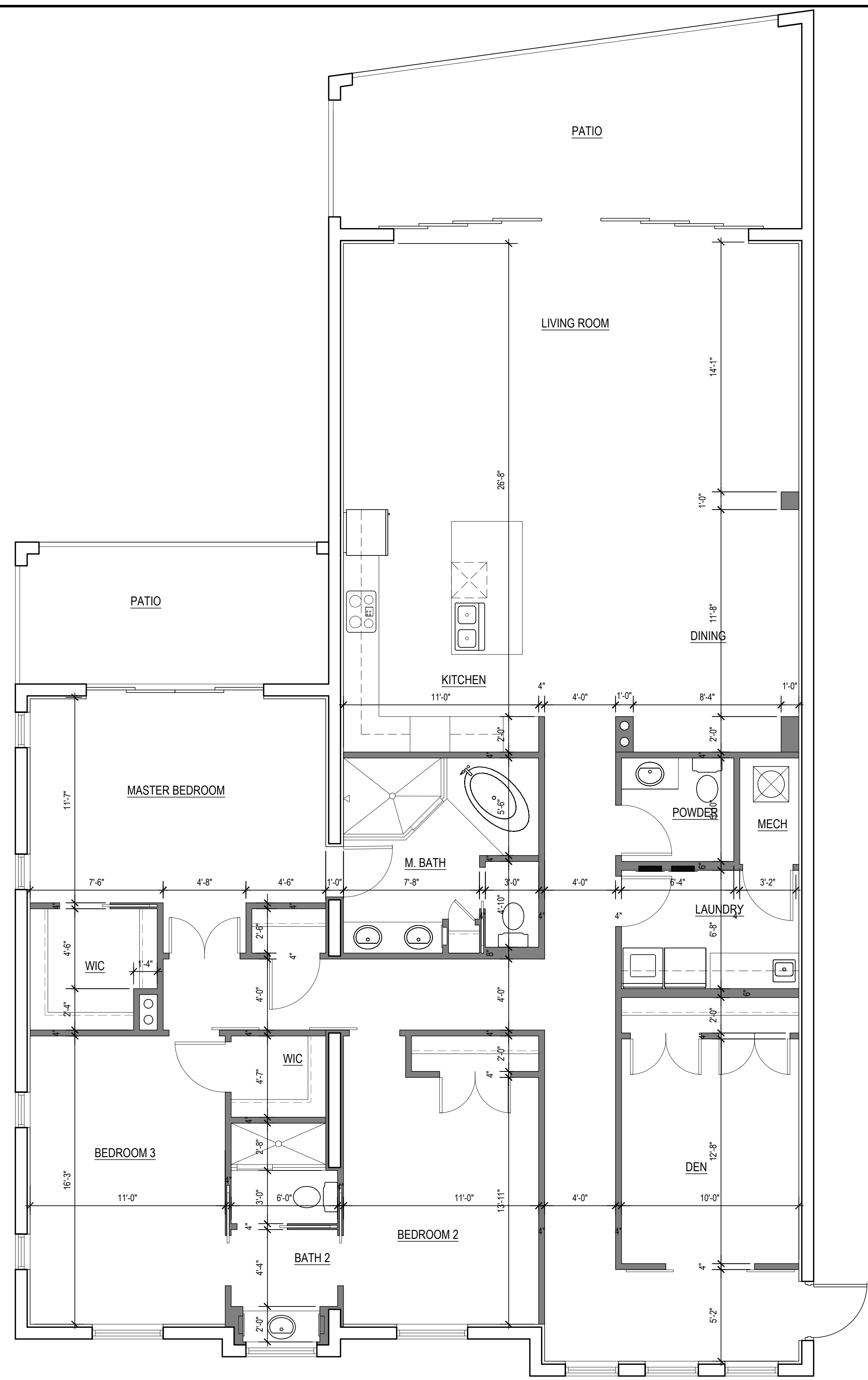
| REVISIONS | |
|-----------|--|
| | |
| | |
| | |



SHEET NO.
A5.2a



UNIT B CEILING PLAN
 SCALE: 1/4" = 1'-0"



UNIT B FLOOR PLAN
 SCALE: 1/4" = 1'-0"

| UNIT B - AREA | |
|---------------|---------------|
| LIVING AREA | 2,219 SQ. FT. |
| PATIO AREA | 378 SQ. FT. |
| TOTAL AREA | 2,597 SQ. FT. |

- KEY NOTE SCHEDULE**
- DOUBLE BOWL STAINLESS STEEL SINK & DISPOSAL W/ WHITE SINGLE CONTROL TELESCOPIC FAUCET & SEPARATE SPRAY
 - VENTILATED SHELF AND ROD
 - MIRROR (MASTER BATH: 4'-0" H. STD BATH: 4'-0" H - ALL MIRRORS TO BE COUNTER LENGTH)
 - 36" THERMOFOIL CABINETS WITH RAISED PANEL DOORS AND GRANITE COUNTERTOPS
 - DISHWASHER
 - 4" DRYER VENT REFER TO MECHANICAL PLANS
 - REFRIGERATOR
 - ELECTRICAL PANEL, COORDINATE LOCATION W/ ELECTRICAL
 - MEDICINE CABINET (RECESSED) 14" x 18"
 - WASHER HOOK UP BOX W/ HOT & COLD WATER & DRAIN
 - WALL OVEN
 - PROVIDE CONDENSATE DRAIN FROM AIR HANDLER UNIT
 - NOT USED
 - FRAMED TEMPERED GLASS SHOWER DOOR AND SIDE LIGHT
 - COUNTER MOUNT COOK TOP
 - WASHER AND DRYER
 - LVT FLOORING
 - CARPET

ALL DESIGN, DESIGN AND PLANS INDICATED ON OR REPRESENTED BY THESE DOCUMENTS ARE OWNED BY AND ARE PROPERTY OF PDS ARCHITECTURE INC. PDS ARCHITECTURE INC. HEREBY EXPRESSLY RESERVES ITS COPYRIGHT AND OTHER INTELLECTUAL PROPERTY RIGHTS IN THESE DOCUMENTS. THESE PLANS AND DRAWINGS ARE NOT TO BE REPRODUCED, CHANGED OR COPIED IN ANY MANNER WITHOUT FIRST OBTAINING WRITTEN PERMISSION AND CONSENT OF PDS ARCHITECTURE INC. YOU ARE TRY TO BE ASSIGNED TO ANY PARTY WITHOUT OBTAINING WRITTEN CONSENT OF PDS ARCHITECTURE INC.